



Heartland Consumers Power District

COMMERCIAL LIGHTING REBATE

The Power Forward commercial lighting rebate program is provided by Heartland Consumers Power District in collaboration with your local municipal utility. Incentives are provided to commercial and industrial customers for upgrading to new, high-efficient lighting. Rebates for new construction are not available at this time.

New equipment must be installed and old equipment properly removed before applying for a rebate.

Power Forward offers incentives on a first-come, first-served basis.

Incentives will not be paid without the completion of the application form and proof of purchase and installation.

Rebate will not exceed cost of bulb or fixture before taxes.

Upgrades other than those listed in this application may also be considered for incentives. Please contact Ann Hyland at Heartland Consumers Power District at ahyland@hcpd.com or (800) 520-4746 to discuss custom rebates.

Rebate Checklist:

In order to ensure timely approval and issuance of your rebate, please complete the following steps. Incomplete applications may result in delayed payment.

- ☐ Read the application Terms and Conditions (page 3) and determine if you are eligible for a rebate under this program
- ☐ Complete this application form
- ☐ Attach the following documentation:
 - ☐ Itemized invoices including material details and cost
 - ☐ Lighting specification sheets for installed lighting
 - ☐ Details on lighting being replaced including type and wattage
- ☐ Submit the application and required documentation to your local utility

Applicant Information

Business Name: _____

Address: _____

Installation Address (if different from above): _____

City: _____

State: _____ Zip: _____

Contact Person: _____

Phone Number: _____

Email Address: _____

Name of Contractor (if applicable): _____

Phone Number: _____



Qualifying Equipment Information

Proof of purchase and installation must be provided. Sales receipts or invoices should outline number of fixtures, number of lamps in each fixture and wattage of lamps used. Details on lighting being replaced, including existing technology, number of fixtures, number of lamps in each fixture and wattage of lamps used, must also be provided. Rebate will not exceed cost of bulb or fixture before taxes.

Lighting Upgrade	Existing watts/fixture or bulb	New watts/fixture or bulb	Incentive (A)	Quantity (B)	Total (A*B)
Occupancy sensors			\$15/sensor		
LED wall packs					
LED - 25 watts to 60 watts			\$20		
LED - Greater than 60 watts			\$30		
LED screw-in replacement lamp to replace incandescent or halogen					
LED Greater than 12 watts			\$5/lamp		
Replace high pressure sodium, metal halide or mercury vapor with LED					
LED - 149 watts or less			\$40/fixture		
LED - 150 watts and above			\$50/fixture		
Replace T5, T8 or T12 lamps with linear replacement lamps					
2 foot LED			\$2/lamp		
4 foot LED			\$3/lamp		
8 foot LED			\$5/lamp		
Replace T5, T8 or T12 fixture with LED flat panel					
LED - 48 watts or less			\$20/fixture		
LED - 49 watts and above			\$30/fixture		
Replace incandescent EXIT sign with LED fixture			\$10/fixture		
Total Incentive Requested					

Custom Rebate*		Existing watts/fixture or bulb	New watts/fixture or bulb	Incentive (A)	Quantity (B)	Total (A*B)
Existing Fixture Type	New Fixture Type					
Total Incentive Requested						

**Custom rebates other than those listed on this application may be available. Please contact your local utility or Heartland Consumers Power District for details. Preapproval from Heartland is required for all custom rebates.*

I hereby certify that the information contained in this application is accurate and complete and that I have read and understand the terms and conditions set forth in this application.

Authorized Signature: _____

Print Name: _____

Title: _____ Date: _____

Please return completed application and all accompanying documentation to your local utility.

Power Forward Commercial Lighting Program

Eligibility

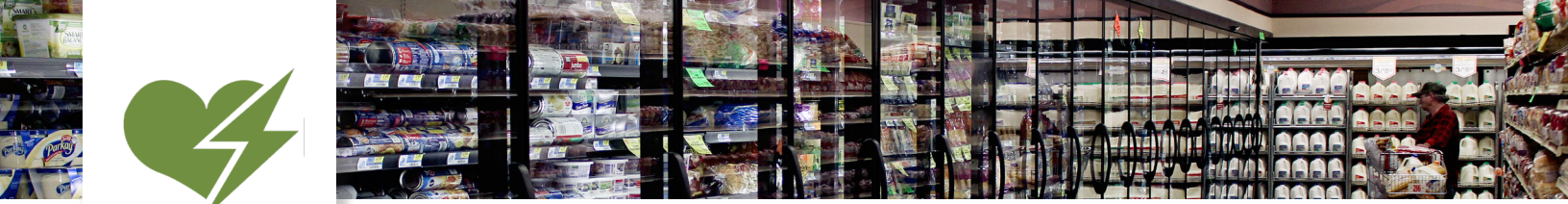
1. Power Forward commercial lighting incentives are provided by Heartland Consumers Power District (Heartland) and their participating electric utility customers. Commercial and industrial customers of participating utilities are eligible to apply for incentives. For a list of participating utilities, visit www.hcpd.com or contact your local utility to verify participation.
2. Only existing lighting systems qualify for the incentives. New construction or the addition of more light fixtures in a facility does not qualify. The number of new lighting fixtures will equal the number of fixtures being replaced. If the quantity of new and existing fixtures is not equal, the lesser quantity will be eligible for incentives.
3. Eligible equipment must be connected to an electric service billed under a commercial or industrial rate class by the participating utility. Only new products will be eligible for incentives and must replace old equipment.
4. This program is applicable to lighting upgrades as outlined in the application. Rebates for other lighting upgrades may be granted at the discretion of Heartland. Lighting upgrades other than those outlined in this application must be pre-approved by Heartland staff before installation in order to be eligible for incentives.

Terms & Conditions:

1. Incentive payments will be disbursed on a first-come, first-served basis and are subject to eligibility and availability of funds. This program and its incentive amounts are subject to change or termination without notice. Neither pre-approval of a project, nor any other action by Heartland or its participating utilities, will entitle a customer to an incentive payment until the application is finally approved by Heartland.
2. Incentives will be paid after new equipment is installed and operating. Projects must be started on or after January 1, 2022 and completed by December 31, 2022 to qualify.
3. Incentives will not be paid without the completion of the application form and proof of purchase and installation. Sales receipt(s) or invoice(s) itemizing the new equipment and indicating the size, type, make, model, purchase date and vendor must accompany the application. Details on the lighting being replaced must also be provided including existing lighting technology, number of existing fixtures, number of lamps in each fixture, and the wattage of lamps used.
4. The incentive payment will come directly from the company's local electric utility in a manner chosen by the utility. Please allow up to 90 days for delivery of incentives.
5. Heartland and its participating utilities reserve the right to do random spot checks to verify program compliance.
6. Heartland and all participating utilities are not responsible for any tax liability imposed on the customer as a result of the energy efficiency incentive payment.
7. Heartland does not endorse or warrant any particular manufacturers, contractors, products, or system designs in promoting this program.
8. Heartland does not guarantee any equipment funded under this program or that a specific level of energy or cost savings will result from products funded by these incentives.
9. The customer/contractor is responsible for proper disposal and/or recycling of any waste generated as a result of this project.
10. Heartland and its participating utilities are not liable for any damage or injury arising from or related to the removal, installation or operation of any equipment, or any other action taken by the customer, in connection with a project undertaken by the customer under the program described in this application.
11. Falsifying any information may lead to cancellation of current and future incentive applications.
12. Heartland and its participating utilities reserve the right to publicize your participation in this program unless you specifically request otherwise, in writing.

If you have questions about the commercial lighting program, contact:

Ann Hyland
Heartland Consumers Power District
(800) 520-4746
ahyland@hcpd.com



Application Terms & Conditions

The Power Forward commercial refrigeration rebate program is provided by Heartland Consumers Power District in collaboration with your local municipal utility. Incentives are provided to commercial customers for purchasing new, high-efficient equipment.

Power Forward offers incentives on a first-come, first-served basis. Submitting an application is not a guarantee of funding. Rebates will be paid by your local utility in a manner they deem appropriate. This program is subject to change or termination without notice.

Incentives will not be paid without the completion of the application form and proof of purchase and installation. Sales receipts or invoices itemizing the new equipment must accompany the application. ENERGY STAR verification, where indicated, must also be included.

Rebates are only available on equipment as outlined in this application, purchased and applied for in the current calendar year. Equipment must be new and installed by December 31, 2022.

For a list of participating utilities, visit www.hcpd.com or contact your local utility to verify participation.



Heartland Consumers Power District

COMMERCIAL REFRIGERATION REBATE

Rebate Checklist:

In order to ensure timely approval and issuance of your rebate, please complete the following steps. Incomplete applications may result in delayed payment.

- ☐ Read the application terms and conditions to determine if you are eligible for a rebate under this program
- ☐ Complete the application form
- ☐ Attach the following documentation:
 - ☐ Copies of all project invoices itemizing new equipment purchased including purchase date, size, type, make, model and total project cost
 - ☐ Manufacturer specification sheets
 - ☐ Verification of ENERGY STAR rating
- ☐ Submit the application and required documentation to your local utility

Applicant Information

Business Name: _____

Address: _____

Installation Address (if different from above): _____

City: _____

State: _____ Zip: _____

Contact Person: _____

Phone Number: _____

Email Address: _____

Name of Contractor: _____

Phone Number: _____

Incentive Request

LED Refrigerated or Freezer Case Display Lighting

LED must serve as the only source of light for the case. Incentive is per door for vertical lighting. Open display cases do not qualify.

Quantity of Doors	Case Type	Incentive per Door	Total Incentive
	Refrigerator	\$25	
	Freezer	\$25	

Anti-Sweat Heater Controls - Refrigerated Display Cases or Freezers

Must sense humidity or condensation and adjust heater accordingly.

Make and Model	Case Type	Quantity of Doors Controlled	Incentive per Door	Total Incentive
	Refrigerator		\$25	
	Freezer		\$25	

Replace standard shaded-pole evaporator fan motor with electronically commutated motor

Manufacturer and Model	Application Type	Quantity	Incentive per Motor	Total Incentive
	Walk in Cooler		\$75	
	Reach in Cooler		\$30	

ENERGY STAR Commercial Solid or Glass Door Refrigerator (self-contained)

Manufacturer and Model	Size (ft ³)	Quantity	Incentive per Unit	Total Incentive
			\$200	

ENERGY STAR Commercial Solid or Glass Door Freezer (self-contained)

Manufacturer and Model	Size (ft ³)	Quantity	Incentive per Unit	Total Incentive
			\$200	

Total Incentive Request	
--------------------------------	--

I hereby certify that the information contained in this application is accurate and complete and that I have read and understand the terms and conditions set forth in this application.

Authorized Signature: _____

Print Name: _____

Title: _____ Date: _____

Please return completed application and all accompanying documentation to your local utility.



Heartland Consumers Power District

HEATING AND COOLING REBATE

Application Terms & Conditions

The Power Forward heating and cooling rebate program is provided by Heartland Consumers Power District in collaboration with your local municipal utility. Incentives are provided for the purchase of an ENERGY STAR rated air-source heat pump, central air conditioner or geothermal heat pump.

- Customers of participating utilities served by Heartland are eligible for rebates.
- Rebates are only available on ENERGY STAR models as outlined in this application, purchased and applied for in the current calendar year. Applications must be submitted by December 31, 2022.
- Rebates are available on a first-come, first-served basis and are subject to eligibility and availability of funds. This program is subject to change or termination without notice.
- A copy of proof of purchase/sales receipt along with the AHRI certificate of product ratings must be included with this application and will not be returned.
- Rebates will be issued by your local electric utility in a manner chosen by the utility. Please allow up to 90 days for delivery of rebates.
- Equipment must be new and installed by December 31, 2022. Old equipment (if applicable) must be properly removed and disposed of in order to be eligible for the rebate.

For a list of participating utilities, visit www.hcpd.com or contact your local utility to verify participation.



Rebate Checklist:

In order to ensure timely approval and issuance of your rebate, please complete the following steps. Incomplete applications may result in delayed payment.

- ☐ Read the application Terms and Conditions and determine if you are eligible for a rebate under this program
- ☐ Complete this application form
- ☐ Attach the following documentation:
 - ☐ Itemized invoice including equipment manufacturer, model numbers, size or capacity, date of installation and installation address
 - ☐ AHRI Certificate of Product Ratings for the equipment installed (obtained from your contractor)
- ☐ Submit the application and required documentation to your local utility

For central air conditioners and air-source heat pumps, both the indoor evaporator coil (A-Coil) and the outdoor condensing unit need to be replaced in order to qualify for the incentive.

Applicant Information

Name: _____

Date of Application: _____

Address: _____

City: _____ State: _____ Zip: _____

Daytime Phone Number: _____

Email Address: _____

Building Type

☐ Existing

☐ New Construction

Building Use

☐ Residential

☐ Multi-Family

☐ Commercial

☐ Industrial

☐ Small Business

Equipment Information

☐ **AIR-SOURCE HEAT PUMP - \$200** *Electricity must be the primary heating source where equipment is installed.

Must have a minimum SEER Rating of 15 and minimum HSPF of 8.2.

Seasonal Energy Efficiency Ratio (SEER): _____ Purchase Date: _____

Condenser Unit

Manufacturer: _____

Model Number: _____ Serial Number: _____

Evaporator Coil (A-Coil)

Manufacturer: _____

Model Number: _____ Serial Number: _____

☐ **CENTRAL AIR CONDITIONER - \$200**

Must have a minimum SEER Rating of 15.

Seasonal Energy Efficiency Ratio (SEER): _____ Purchase Date: _____

Condenser Unit

Manufacturer: _____

Model Number: _____ Serial Number: _____

Evaporator Coil (A-Coil)

Manufacturer: _____

Model Number: _____ Serial Number: _____

☐ **GEOTHERMAL HEAT PUMP - \$600** *Must be primary heating and cooling source

- ☐ Closed Loop Water to Air (Must have a minimum EER Rating of 17.1 and minimum COP of 3.6.)
- ☐ Closed Loop Water to Water (Must have a minimum EER Rating of 16.1 and minimum COP of 3.1.)
- ☐ Open Loop Water to Air (Must have a minimum EER Rating of 21.1 and minimum COP of 4.1.)
- ☐ Open Loop Water to Water (Must have a minimum EER Rating of 20.1 and minimum COP of 3.5.)
- ☐ Direct Geoexchange (Must have a minimum EER Rating of 16.0 and minimum COP of 3.6.)

Energy Efficiency Ratio (EER): _____ Purchase Date: _____

Manufacturer: _____

Model Number: _____ Serial Number: _____

Retailer/Contractor Information

Name of Installing Contractor: _____

Contact Person: _____ Phone Number: _____

Heartland and its participating utilities do not endorse or warrant any equipment funded under this program or guarantee that a specific level of energy or cost savings will result from products funded by these rebates. Heartland and its participating utilities reserve the right to perform random spot checks to verify program compliance, are not responsible for any tax liability imposed on the customer as a result of these incentives, and are not liable for any damage or injury relating to the removal, installation or operation of any equipment in connection with this application.

I hereby certify that the information contained in this application is accurate and complete and that I have read, understand and agree to the terms and conditions set forth in this application.

Signature: _____ Date: _____

Please return completed application and accompanying documentation to your local utility. Incomplete applications will cause delays in payment or denial of the application.

Heating Seasonal Performance Factor (HSPF): A measure of a heat pump's energy efficiency over one heating season. It represents the total heating output of a heat pump (including supplementary electric heat) during the normal heating season (in Btu) as compared to the total electricity consumed (in watt-hours) during the same period.
Seasonal Energy Efficiency Ratio (SEER): A measure of equipment energy efficiency over the cooling season. It represents the total cooling of a central air conditioner or heat pump (in Btu) during the normal cooling season as compared to the total electric energy input (in watt-hours) consumed during the same period.
Coefficient of Performance (COP): A measure of efficiency in the heating mode that represents the ratio of total heating capacity to electrical energy input.
Energy Efficiency Ratio (EER): A measure of efficiency in the cooling mode that represents the ratio of total cooling capacity to electrical energy input.



Heartland Consumers Power District RESIDENTIAL LED LIGHTING REBATE

Application Terms & Conditions

The Power Forward residential LED lighting rebate program is provided by Heartland Consumers Power District in collaboration with your local municipal utility. Incentives are provided for the purchase of ENERGY STAR rated LED light bulbs, 9 watts or greater.

- Residential customers of participating utilities served by Heartland are eligible for rebates.
- Rebates are only available on ENERGY STAR rated LED light bulbs, 9 watts or greater, purchased and applied for in the current calendar year. Applications must be submitted by December 31, 2022.
- A rebate of \$2 will be provided per LED screw-in lamp. A rebate of \$4 will be provided per LED recessed can fixture or retrofit kit. Rebate will not exceed cost of bulb or fixture before taxes. Each account is eligible to receive a maximum LED lighting rebate of \$100 annually.
- Rebates are available on a first-come, first-served basis and are subject to eligibility and availability of funds. This program is subject to change or termination without notice.
- A copy of proof of purchase/sales receipt and verification of ENERGY STAR rating must be included with this application and will not be returned.
- Rebates will be issued by your local electric utility in a manner chosen by the utility. Please allow up to 90 days for delivery of rebates.

For a list of participating utilities, visit www.hcpd.com or contact your local utility to verify participation.



Rebate Checklist:

In order to ensure timely approval and issuance of your rebate, please complete the following steps. Incomplete applications may result in delayed payment.

- ☐ Read the application terms and conditions to determine if you are eligible for a rebate under this program
- ☐ Complete the application form
- ☐ Attach the following documentation:
 - ☐ Copy of proof of purchase/sales receipts
 - ☐ Verification of ENERGY STAR rating
- ☐ Submit the application and required documentation to your local utility

Proof of purchase and ENERGY STAR verification must be included with the application.

Applicant Information

Name: _____

Date of Application: _____

Address: _____

City: _____ State: _____ Zip: _____

Daytime Phone Number: _____

Email Address: _____

Rebate Information

Type of bulb replaced/wattage:

☐ CFL - Wattage: _____

☐ Incandescent - Wattage: _____

☐ Other: _____ Wattage: _____

OR

☐ New Construction

Store Name and Location: _____

Bulb manufacturer: _____ LED wattage: _____

Number of bulbs: _____ **x \$2 =** Rebate Amount: _____

Number of recessed can fixtures or retrofit kits: _____ **x \$4 =** Rebate Amount: _____

Total Rebate (maximum of \$100): _____

Proof of purchase and ENERGY STAR verification included? YES or NO **(Please circle)**

Signature: _____ Date: _____

Heartland and its participating utilities do not endorse or warrant any equipment funded under this program or guarantee that a specific level of energy or cost savings will result from products funded by these rebates.

Please return completed application and all accompanying documentation to your local utility.



Heartland Consumers Power District

HEATING AND COOLING REBATE

Application Terms & Conditions

The Power Forward heating and cooling rebate program is provided by Heartland Consumers Power District in collaboration with your local municipal utility. Incentives are provided for the purchase of an ENERGY STAR rated air-source heat pump, central air conditioner or geothermal heat pump.

- Customers of participating utilities served by Heartland are eligible for rebates.
- Rebates are only available on ENERGY STAR models as outlined in this application, purchased and applied for in the current calendar year. Applications must be submitted by December 31, 2022.
- Rebates are available on a first-come, first-served basis and are subject to eligibility and availability of funds. This program is subject to change or termination without notice.
- A copy of proof of purchase/sales receipt along with the AHRI certificate of product ratings must be included with this application and will not be returned.
- Rebates will be issued by your local electric utility in a manner chosen by the utility. Please allow up to 90 days for delivery of rebates.
- Equipment must be new and installed by December 31, 2022. Old equipment (if applicable) must be properly removed and disposed of in order to be eligible for the rebate.

For a list of participating utilities, visit www.hcpd.com or contact your local utility to verify participation.



Rebate Checklist:

In order to ensure timely approval and issuance of your rebate, please complete the following steps. Incomplete applications may result in delayed payment.

- ☐ Read the application Terms and Conditions and determine if you are eligible for a rebate under this program
- ☐ Complete this application form
- ☐ Attach the following documentation:
 - ☐ Itemized invoice including equipment manufacturer, model numbers, size or capacity, date of installation and installation address
 - ☐ AHRI Certificate of Product Ratings for the equipment installed (obtained from your contractor)
- ☐ Submit the application and required documentation to your local utility

For central air conditioners and air-source heat pumps, both the indoor evaporator coil (A-Coil) and the outdoor condensing unit need to be replaced in order to qualify for the incentive.

Applicant Information

Name: _____

Date of Application: _____

Address: _____

City: _____ State: _____ Zip: _____

Daytime Phone Number: _____

Email Address: _____

Building Type

☐ Existing

☐ New Construction

Building Use

☐ Residential

☐ Multi-Family

☐ Commercial

☐ Industrial

☐ Small Business

Equipment Information

☐ **AIR-SOURCE HEAT PUMP - \$200** *Electricity must be the primary heating source where equipment is installed.

Must have a minimum SEER Rating of 15 and minimum HSPF of 8.2.

Seasonal Energy Efficiency Ratio (SEER): _____ Purchase Date: _____

Condenser Unit

Manufacturer: _____

Model Number: _____ Serial Number: _____

Evaporator Coil (A-Coil)

Manufacturer: _____

Model Number: _____ Serial Number: _____

☐ **CENTRAL AIR CONDITIONER - \$200**

Must have a minimum SEER Rating of 15.

Seasonal Energy Efficiency Ratio (SEER): _____ Purchase Date: _____

Condenser Unit

Manufacturer: _____

Model Number: _____ Serial Number: _____

Evaporator Coil (A-Coil)

Manufacturer: _____

Model Number: _____ Serial Number: _____

☐ **GEOTHERMAL HEAT PUMP - \$600** *Must be primary heating and cooling source

- ☐ Closed Loop Water to Air (Must have a minimum EER Rating of 17.1 and minimum COP of 3.6.)
- ☐ Closed Loop Water to Water (Must have a minimum EER Rating of 16.1 and minimum COP of 3.1.)
- ☐ Open Loop Water to Air (Must have a minimum EER Rating of 21.1 and minimum COP of 4.1.)
- ☐ Open Loop Water to Water (Must have a minimum EER Rating of 20.1 and minimum COP of 3.5.)
- ☐ Direct Geoexchange (Must have a minimum EER Rating of 16.0 and minimum COP of 3.6.)

Energy Efficiency Ratio (EER): _____ Purchase Date: _____

Manufacturer: _____

Model Number: _____ Serial Number: _____

Retailer/Contractor Information

Name of Installing Contractor: _____

Contact Person: _____ Phone Number: _____

Heartland and its participating utilities do not endorse or warrant any equipment funded under this program or guarantee that a specific level of energy or cost savings will result from products funded by these rebates. Heartland and its participating utilities reserve the right to perform random spot checks to verify program compliance, are not responsible for any tax liability imposed on the customer as a result of these incentives, and are not liable for any damage or injury relating to the removal, installation or operation of any equipment in connection with this application.

I hereby certify that the information contained in this application is accurate and complete and that I have read, understand and agree to the terms and conditions set forth in this application.

Signature: _____ Date: _____

Please return completed application and accompanying documentation to your local utility. Incomplete applications will cause delays in payment or denial of the application.

Heating Seasonal Performance Factor (HSPF): A measure of a heat pump's energy efficiency over one heating season. It represents the total heating output of a heat pump (including supplementary electric heat) during the normal heating season (in Btu) as compared to the total electricity consumed (in watt-hours) during the same period.
Seasonal Energy Efficiency Ratio (SEER): A measure of equipment energy efficiency over the cooling season. It represents the total cooling of a central air conditioner or heat pump (in Btu) during the normal cooling season as compared to the total electric energy input (in watt-hours) consumed during the same period.
Coefficient of Performance (COP): A measure of efficiency in the heating mode that represents the ratio of total heating capacity to electrical energy input.
Energy Efficiency Ratio (EER): A measure of efficiency in the cooling mode that represents the ratio of total cooling capacity to electrical energy input.



Heartland Consumers Power District

WATER HEATER

REBATE

Application Terms & Conditions

The Power Forward water heater rebate program is provided by Heartland Consumers Power District in collaboration with your local municipal utility. Incentives are provided for the purchase of an electric water heater with a lifetime warranty, 50 gallons or larger. Water heaters 50 to 79 gallons are eligible for a \$200 rebate; 80 gallons and larger are eligible for a \$400 rebate.

- Customers of participating utilities served by Heartland are eligible for rebates.
- Rebates are only available on lifetime warranty electric water heaters, 50 gallons or larger, purchased and applied for in the current calendar year. Applications must be submitted by December 31, 2022.
- Rebates are available on a first-come, first-served basis and are subject to eligibility and availability of funds. This program is subject to change or termination without notice.
- A copy of proof of purchase/sales receipt and verification of lifetime warranty must be included with this application and will not be returned. Water heater must be installed before submitting application.
- Rebates will be issued by your local electric utility in a manner chosen by the utility. Please allow up to 90 days for delivery of rebates.
- Please note: MHD and MR models of Marathon water heaters must now be registered within 90 days of installation to qualify for the Limited Lifetime Warranty. If it is not registered within 90 days, it is covered only by a 10-year Limited Warranty. Proof of registration for these models must be included with this application to qualify for the rebate.

For a list of participating utilities, visit www.hcpd.com or contact your local utility to verify participation.

Rebate Checklist:

In order to ensure timely approval and issuance of your rebate, please complete the following steps. Incomplete applications may result in delayed payment.

- ☐ Read the application terms and conditions to determine if you are eligible for a rebate under this program
- ☐ Complete the application form
- ☐ Attach the following documentation:
 - ☐ Copy of proof of purchase/sales receipts
 - ☐ Verification of lifetime warranty
- ☐ Submit the application and required documentation to your local utility

Proof of purchase and verification of lifetime warranty must be included with this application.

Applicant Information

Name: _____

Date of Application: _____

Address: _____

City: _____ State: _____ Zip: _____

Daytime Phone Number: _____

Email Address: _____

Rebate Information

Water Heater Purpose

☐

New Construction

☐

Gas Conversion

☐

Electric Replacement

Date Purchased: _____

Store Name and Location: _____

Manufacturer: _____

Serial Number: _____

Model Number: _____

Gallon Size: _____

Efficiency Factor: _____

Proof of purchase and documentation of lifetime warranty included? YES or NO **(Please circle)**

Heartland and its participating utilities do not endorse or warrant any equipment funded under this program or guarantee that a specific level of energy or cost savings will result from products funded by these rebates. Heartland and its participating utilities reserve the right to perform random spot checks to verify program compliance, are not responsible for any tax liability imposed on the customer as a result of these incentives, and are not liable for any damage or injury relating to the removal, installation or operation of any equipment in connection with this application.

I hereby certify that the information contained in this application is accurate and complete and that I have read, understand and agree to the terms and conditions set forth in this application.

Signature: _____ Date: _____

Please return completed application and all accompanying documentation to your local utility.